

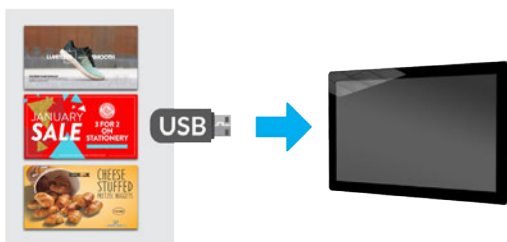
Android Advertising Displays

19" | 22" | 32" | 43" | 50" | 55"



Plug and Play

Plug and Play is the most straightforward way to upload content to the screen. Simply load images and videos onto a USB stick, insert into the display, wait for your content to copy over and then remove. Your images and videos will now play in a continuous loop.



Free Scheduling Software

These displays come with free scheduling software for displaying different content at different times of the day. If you prefer to keep it simple you can update the screen directly without using the software.



450cd/m² IPS Panel

Commercial grade IPS technology accurately displays image quality and colour depth with no fall-off in colour accuracy. These panels are designed to achieve ultimate lifelike colour temperature when used in either landscape or portrait.



24/7 Commercial Use

These displays use a commercial grade LCD panel and LED backlight. They have the ability to be in constant use 24/7 for over 70,000 hours and have no external buttons or controls to avoid tampering.



Other Features

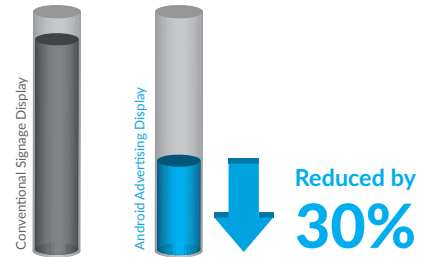
Power Timer

The eco-friendly power timer allows you to assign daily or weekly on and off times for your screen meaning that it is only in use when it needs to be; improving your environmental efficiency.



Low Power Consumption

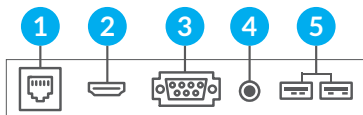
The LED backlight technology provides improved brightness and contrast. Their lifespan is drastically improved to over 70,000 hours and the power consumption is reduced by around 30%.



Multiple Inputs

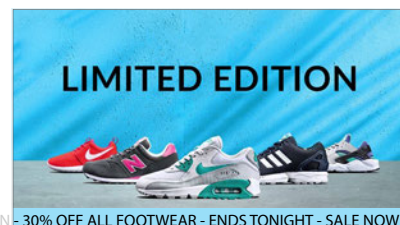
Should you need to use the screen as a monitor you can connect it to an external source, like a PC or media player, using the HDMI input or the VGA and 3.5mm audio jack inputs.

- 1 LAN
- 2 HDMI
- 3 VGA
- 4 Audio in
- 5 2 x USB



Scrolling Text

You can display a "ticker tape" style scrolling text message along the bottom of the screen, to help you get your message across or help highlight any specific promotions or offers.



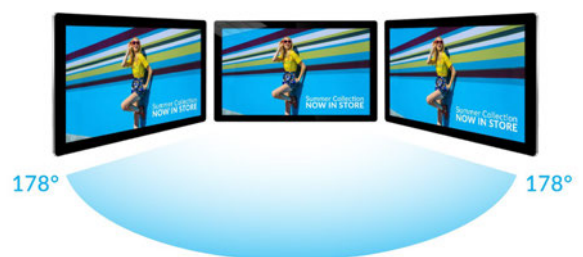
Giant Tablet Styling

Their tempered glass face, rounded corners, super slim profile and aluminium surround all add to the captivating tablet-like aesthetics as well as protecting the internal components from potential damage.



Wide Viewing Angle

Thanks to the IPS technology these displays provide fantastic image quality with a remarkable viewing angle of 178° in both landscape and portrait.



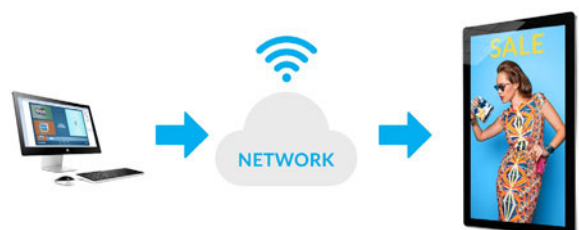
Free Wall Mount

A super slim wall mount is included at no extra cost, allowing you to mount your screen in either landscape or portrait orientation; ensuring that you have a complete turnkey solution.



Optional Network Upgrade

For a small charge you can upgrade your screen to be networked, allowing you to connect your screen via Wi-Fi, LAN or 4G, then remotely update it over the internet.



Key Features



PLUG AND PLAY



INTEGRATED ANDROID
MEDIA PLAYER

VIPS

IPS PANEL



24/7 COMMERCIAL GRADE



LANDSCAPE OR PORTRAIT
ORIENTATION



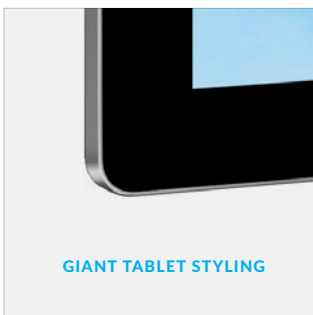
CONNECT DEVICES



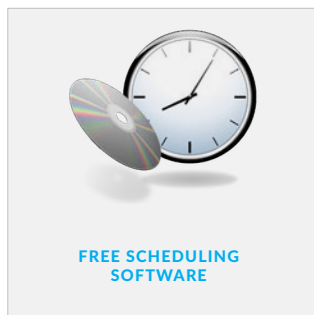
LED BACKLIGHT



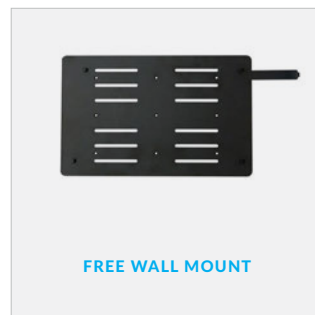
OPTIONAL NETWORK UPGRADE



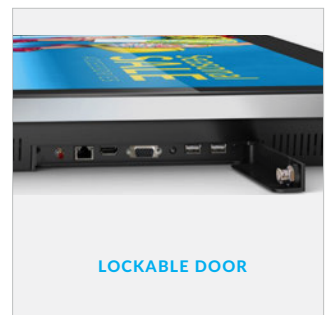
GIANT TABLET STYLING



FREE SCHEDULING
SOFTWARE



FREE WALL MOUNT



LOCKABLE DOOR

Specification Table

		19 Inch	22 Inch	32 Inch	43 Inch	50 Inch	55 Inch
Panel	Resolution	1920x1080					
	Display Area (mm)	408.6x229.6	478x269	699x394	942x525	1075.6x605.4	1211x682
	Aspect Ratio	16:9					
	Brightness (cd/m ²)	450					
	Colour	16.7M					
	Viewing Angle	178°					
	Contrast Ratio	5000:1					
Audio	Speaker Type	5W, 8Ω (x2)					
AV Inputs	Video	HDMI, VGA					
	Audio	Audio Socket (3.5mm)					
Power	Power Consumption (W)	16	22	52	65	75	85
	Input Voltage	AC110~240V (50Hz~60Hz)					
Mechanical	Unit Size (WxHxD mm)	501x322x38	590x383x41	814x504x63	1045x638x63	1199x736x44	1366x837x50.1
	Package Size (WxHxD mm)	578x418x118	660x478x135	956x615x164	1175x775x215	1357x867x176	1525x1016x214
	VESA Holes (mm)	100x100/150x100	100x100	400x200	400x400		
	Net Weight (kg)	6.3	8.3	13.1	22.8	28.05	39.7
	Gross Weight (kg)	7.35	8.85	16.9	30.2	37	49.7
Environmental	Operating Temperature	0 °C to 50 °C					
	Storage Temperature	-30°C to 60°C					
	Operating Humidity	10% to 80%					
	Storage Humidity	5% to 95%					
Computer	Media Formats	Video (MPG, AVI, MP4, RM, RMVB, TS), Audio (MP3, WMA), Image (JPG, GIF, BMP, PNG)					
	Media Resolution	1920x1080/1080x1920					
	Internal Memory	6GB					
	CPU	Quad-Core Cortex-A17@1.61GHz					
	GPU	Mali-T760 MP4 @600MHz					
	RAM	2GB DDR3					
	ROM	8GB NAND					
	USB	USB2.0 HOST (x2)					
	LAN	10/100M Ethernet (Network Version Only)					
	Wi-Fi	802.11b/g/n/ac (Network Version Only)					
	OS	Android 5.1.1					
Accessories	Graphic Engine	OpenGL ES 1.1/2.0/3.0/3.1, OpenCL 1.1, Renderscript, Direct3D 11.1					
	Included	Special Wall Mount, Scheduling Software, Remote Control, Key, User Manual					
Warranty	Optional	Network Upgrade, Touch Screen Version, Wall Mount, Floor Stand/Trolley, Ceiling Mount, Table Stand					
	Warranty Period	3 Year Warranty					
Warranty	Technical Support	Lifetime					

Errors and omissions excepted

